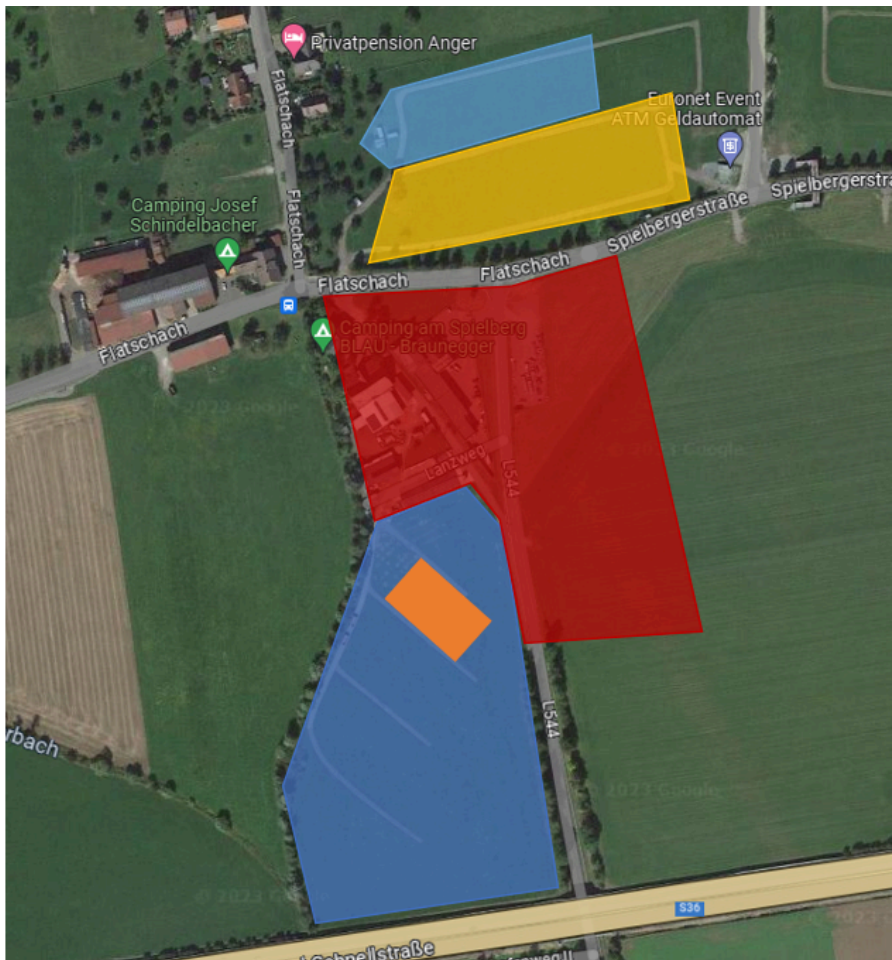


FSA Camping Regulations V2.0



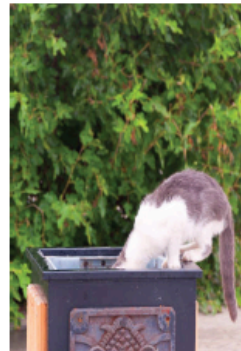
campsite
Silent campsite
NO parking
Event tent
parking

1. The night hours are from 10 pm to 6 am. During this time period, all activities which are likely to disturb night sleep are prohibited.
2. The campsite may be entered only after registration and payment, except on Saturday until 17 pm. You are required to wear the provided bracelets during the whole stay on the campground.
3. It's not allowed to dig holes or channels into the ground.
4. Open fire, such as bonfires and pyrotechnics are not allowed.
5. Electrical charging of vehicles is forbidden on the campsite.
6. Follow Rules A6.4 "Onsite Working Safety" and Rules AT 1.15 "Working on the Campsite"
 - a. Activating the TS at the campsite is only possible after request
 - b. Before you arrive make sure you have a ground sheet according to Rule AT 1.15.2 "Environmental Protection on the Campsite" and use it.

7. To avoid disturbing the silent camping area and the public, point speakers away from the campsite entrance.
8. Damage to the campsite grounds, caused e.g. by tents, caravans, trailers or group activities, can result in monetary fines.
9. Keep the campsite clean. Please collect the waste in trash bags.
 - a. since 2025 Austria has deposit on bottles and cans at local supermarkets
 - b. follow Rule AT 1.17 Hazardous Waste Disposal as per Rules A6.8.3



Gray sack
for residual waste:
all other waste



Glass bin
for glass bottles
and glassware



10. Please keep the sanitary installations clean.
11. Defined areas such as streets must not be used for camping. Teams may set up their tents and equipment in the designated areas; defined/marked areas such as streets have to remain clear at all times.
12. Traffic rules (Straßenverkehrsordnung, StVO) apply on the whole campsite. The speed limit is 10 km/h.
13. Parking next to the campsite is only permitted for vehicles with a maximum permissible weight of 7.5 metric tons. (including trailers and semi trailers)
14. To support your logistics, only one vehicle is allowed to enter or leave the campsite repeatedly during the course of the event. Only cars with the special sticker handed out at on-site registration are allowed to pass the campsite entrance. The stickers are

self-destructive labels and can only be applied to a vehicle once; interchanging of these taxi vehicles is not permitted.

15. Caravans, trailers and other vehicles which will remain on the campsite may enter the area on setup day and must not be moved throughout the course of the event.
16. In any case, vehicles with a permissible maximum weight, including any trailer or semi-trailer, exceeding 7.5 tonnes are strictly forbidden to enter the campsite at any time. These vehicles must only be parked at the designated spot at Red Bull Ring - parking lot (P1F).
17. Parking on country roads (especially L544 - next to the campsite) is prohibited.
18. Drones or other flying equipment are strictly prohibited both on the campsite as well as on the event grounds (military airport nearby!).
19. The campsite closes on Friday, at 12 pm (noon).
20. FSA is allowed to expel you from the campsite or charge your team with penalty points and/or monetary fines after significant or repeated violations of the camping regulations. In that case, you are not entitled to any refunds.