

EVACUATION PLAN FOR EMERGENCIES

GENERAL

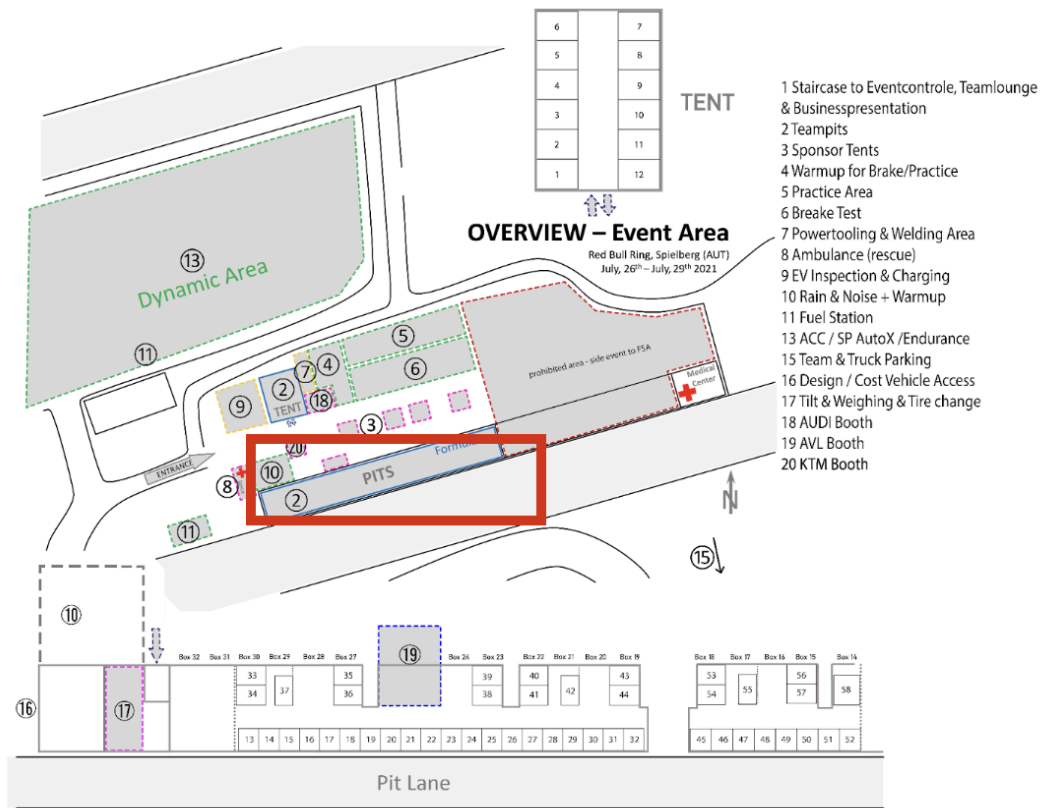
In the event of severe weather conditions (e.g., storm with hurricane-force winds), it may be necessary to evacuate the event grounds due to potential danger to life and limb. We will inform you via Slack and through loudspeaker/megaphone announcements. Please **follow the instructions of the FSA officials** and take it seriously.

There will be approximately 15-20 minutes between announcement and arrival of the expected weather.

RED BULL RING

- ALL people have to go to the pits building immediately, please just take the most important personal belongings with you and close all doors.
- Also evacuate the tents and go to the pits building.





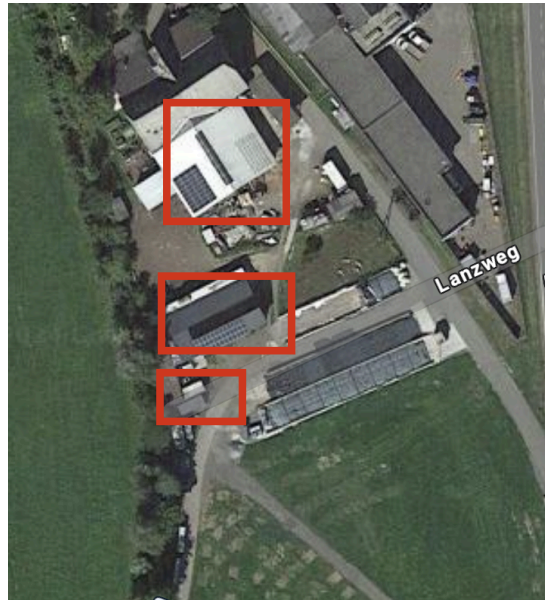
CAMPSITE

If the campsite needs to be evacuated, all individual tents, team tents, and the large event tent must be evacuated. Be aware that the inside of your car might not be safe!

Please go with all your team members to look for shelter in solid buildings, preferably to the pit building at the Red Bull Ring.



If you can't reach the Red Bull Ring in time the possibilities at the campsite are:



- toilet or showering containers at the big campsite or the building on the silent campsite



- the barn



- the stables

